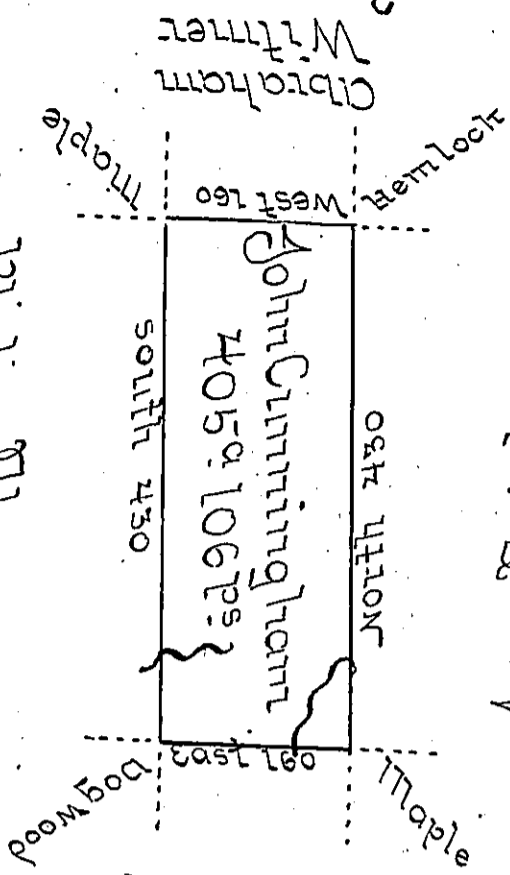


R-77

Philip Thomas



Matthias Slough  
C-205-186

Situate on the waters of the west branch of Susquehanna River about eight miles south of the mouth of Chest Creek and two miles & a half east of the west branch of Susquehanna in Franks Town Township & Huntington County containing 405 Acres & 106 per<sup>s</sup> & the usual allowance for Roads Surveyed the 10<sup>th</sup> day of August 1793 in pursuance of a Warrant dated the ~~17~~<sup>17</sup> day of ~~May~~<sup>June</sup> 1793.

John Conan D.S.

Daniel Brodhead Esq<sup>r</sup> Sg.

IN TESTIMONY that the above is a copy of the original remaining on file in the Department of Internal Affairs of Pennsylvania, made conformably to an Act of Assembly approved the 16th day of February, 1833, I have hereunto set my Hand and caused the Seal of said Department to be affixed at Harrisburg, this sixth day of November 1900.

*James W. Fetter*  
Secretary of Internal Affairs.